

Scale 1" = 100'

LEGEND

- CONCRETE MONUMENT SET
  - CONCRETE MONUMENT FOUND
  - MONUMENT TO BE SET
  - 2462 CONTOUR LINE
  - 2462 CONTOUR LINE
  - 25 FT. SAFETY LINE
  - WATER LINE
  - BUYDOWN AREAS
  - LAKE RESIDENTIAL
  - TOWN CENTER
  - TOWN RESIDENTIAL
  - MONUMENT TO BE SET
  - MONUMENT FOUND
  - MONUMENT LOCATIONS THAT CANNOT BE SET
  - 1" BRASS WITH ALUMINUM CAP SET
  - 2" BRASS DISC SET
- CONTOURS ARE AT 2 FT. INTERVALS REFERENCED TO THE STAFF GAUGE AT THE PENSTOCK.

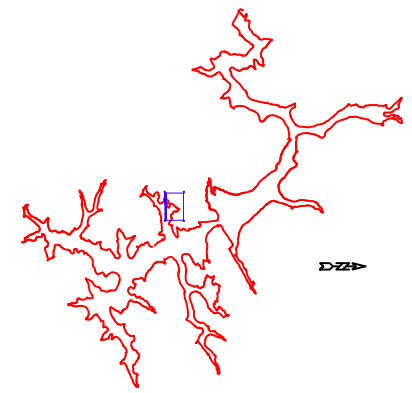
PENELEC CALLS

CONCL. MON. NO.	BEARING	DISTANCE
N-765	N 38° 05' E	694.00 FT.
N-766	N 88° 22' E	283.60 FT.
N-767	S 21° 45' E	267.80 FT.
N-768	S 31° 55' E	11.20 FT.
N-768A	S 89° 30' E	94.65 FT.
S-768A	N 77° 27' E	105.90 FT.
S-768B	N 60° 54' E	100.18 FT.
S-768C	N 22° 22' E	183.55 FT.
S-768D	N 87° 30' W	83.50 FT.
S-768E	N 43° 10' W	80.50 FT.
S-768F	N 78° 13' W	272.50 FT.
S-768G	N 77° 13' W	272.50 FT.
N-770	N 02° 04' W	348.00 FT.
N-525	N 40° 18' E	630.80 FT.
N-108	N 63° 29' E	410.80 FT.
N-109	S 14° 02' E	412.80 FT.
Y-110	S 39° 48' E	312.40 FT.
Y-110A	S 70° 58' E	380.10 FT.
Y-110B	N 82° 28' E	290.10 FT.
Y-110C	S 22° 28' W	220.00 FT.
Y-110D	S 19° 04' W	104.50 FT.
Y-110E	S 06° 01' W	85.80 FT.
Y-110F	S 35° 11' E	46.50 FT.
Y-110G	S 79° 16' E	240.50 FT.
Y-110H		
Y-110I		
Y-110J		

SURVEY CALLS

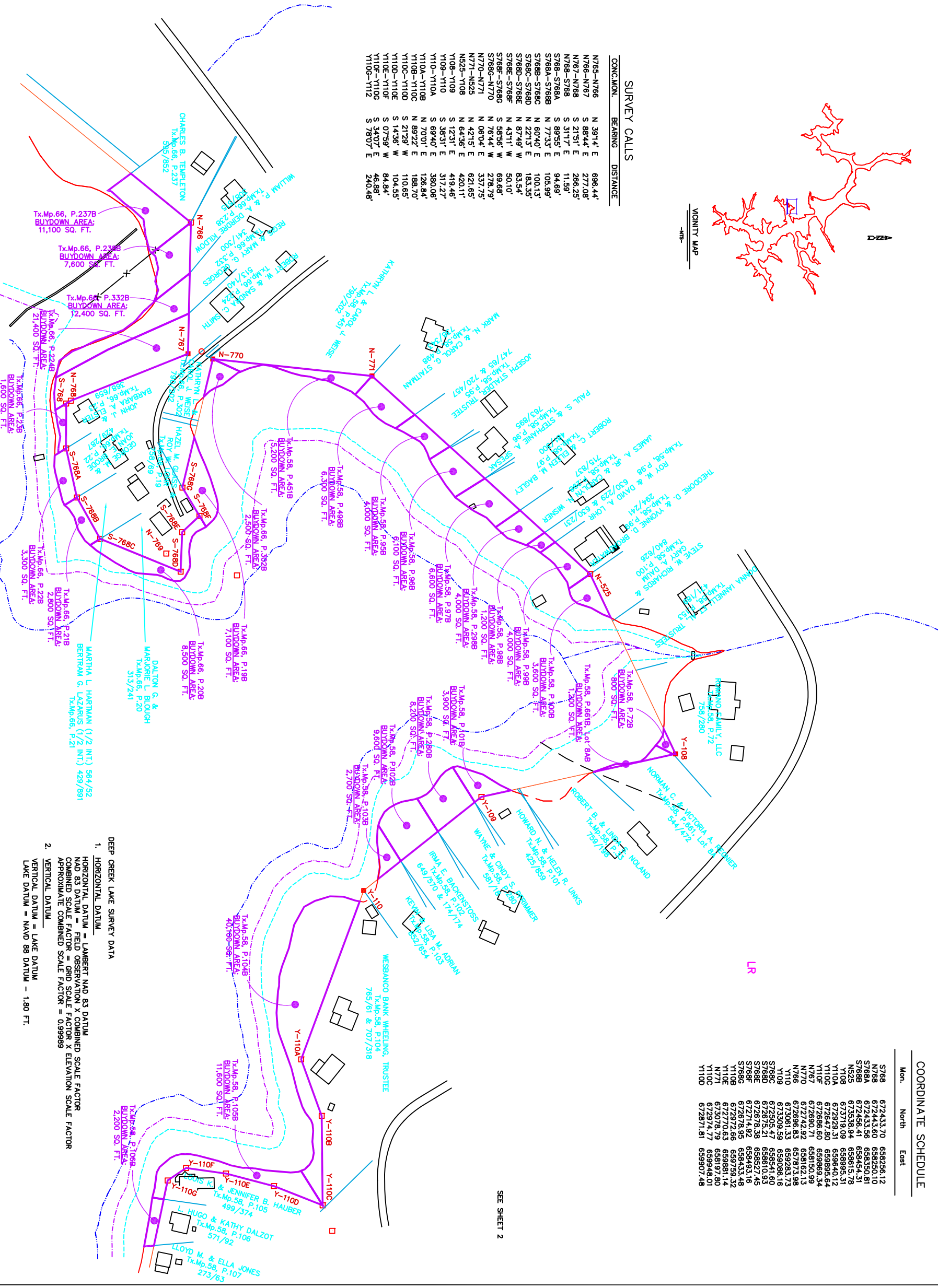
CONCL. MON. NO.	BEARING	DISTANCE
N765-N766	N 39°14' E	696.44'
N766-N767	S 89°44' E	277.08'
N767-N768	S 21°51' E	286.23'
N768-N768A	S 31°17' E	11.59'
S768A-S768B	S 89°35' E	94.69'
S768B-S768C	N 77°33' E	105.99'
S768C-S768D	N 60°40' E	100.13'
S768D-S768E	N 22°13' E	183.35'
S768E-S768F	N 87°49' W	83.54'
S768F-S768G	N 43°11' W	50.10'
S768G-S768H	S 58°56' W	69.68'
S768H-N770	N 78°14' W	278.79'
N770-N771	N 02°04' W	337.75'
N771-N525	N 42°15' E	621.65'
N525-N108	N 64°36' E	420.11'
N108-N109	S 12°31' E	419.46'
Y109-Y110	S 38°31' E	317.27'
Y110-Y110A	S 69°40' E	380.06'
Y110A-Y110B	N 70°01' E	126.84'
Y110B-Y110C	N 89°22' E	188.70'
Y110C-Y110D	S 21°29' W	110.65'
Y110D-Y110E	S 14°36' W	104.55'
Y110E-Y110F	S 07°59' W	84.84'
Y110F-Y110G	S 35°11' E	46.88'
Y110G-Y110H	S 78°07' E	240.48'
Y110H-Y110I		
Y110I-Y110J		

VICINITY MAP



COORDINATE SCHEDULE

Mon.	North	East
S768	672433.70	658256.12
N768	672435.10	658256.12
S768A	672433.58	658350.81
S768B	672456.41	659454.31
N525	673538.94	658615.78
Y108	673719.09	658995.31
Y110A	672929.31	659640.12
Y110B	672647.80	659895.64
Y110C	672686.60	659986.34
N767	672890.71	658150.99
N770	672742.92	659102.13
Y110	672748.83	659283.73
Y109	673309.59	659086.16
S768C	672505.47	658541.60
S768D	672675.21	658610.93
S768E	672678.38	658527.45
S768F	672714.92	658493.16
S768G	672678.95	658433.48
Y110B	672672.68	659739.32
Y110C	672672.68	659739.32
Y110D	672672.68	659739.32
Y110E	672672.68	659739.32
Y110F	672672.68	659739.32
Y110G	672672.68	659739.32
Y110H	672672.68	659739.32
Y110I	672672.68	659739.32
Y110J	672672.68	659739.32



LR

LR

SEE SHEET 2

© COPYRIGHT - 2000 BY  
MORGAN C. FRANCE, L.S., P.E.  
ALL RIGHTS RESERVED

SEE SHEET 4

DRAWN BY: SUSAN N. EVANS PERANDO	APPROVED BY: MORGAN C. FRANCE
DATE: HOOPLES	PILOT DATE: 7/10/00 at 3:20
123(C:\DATA\VP\PROJECTS\VOG\2000\HOOPLES	

REVISIONS	8/30/02
PREPARED FOR:	DEPT. OF GEN. SERVICES - REAL ESTATE
STATE OF MARYLAND	300 West Preston Street, Room 601
Baltimore, Maryland	21201

PREPARED BY:	MORGAN C. FRANCE, L.S., P.E.
10 North Third Street	Oxford, Maryland 21550
(301) 334-2305	

PROJECT: DEEP CREEK PROJECT BUY DOWN SURVEY

DRAWING 3, HOOP POLE

SHEET NO. 3

- DEEP CREEK LAKE SURVEY DATA
- HORIZONTAL DATUM
  - VERTICAL DATUM = LAKE DATUM
- HORIZONTAL DATUM = LAMBERT NAD 83 DATUM  
 VERTICAL DATUM = FIELD OBSERVATION  
 HORIZONTAL SCALE FACTOR = 1.000000  
 VERTICAL SCALE FACTOR = 1.000000  
 APPROXIMATE COMBINED SCALE FACTOR = 0.99989